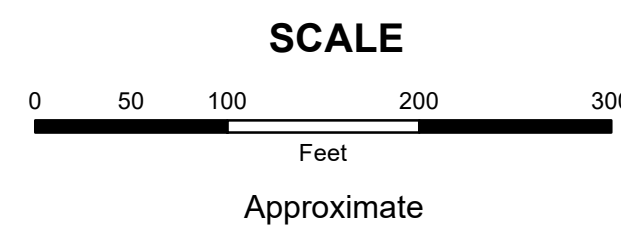


**MAHONING COUNTY**  
**OHIO**  
**SPRINGFIELD TOWNSHIP**  
 Section 12

**TAX MAP**  
**01003**

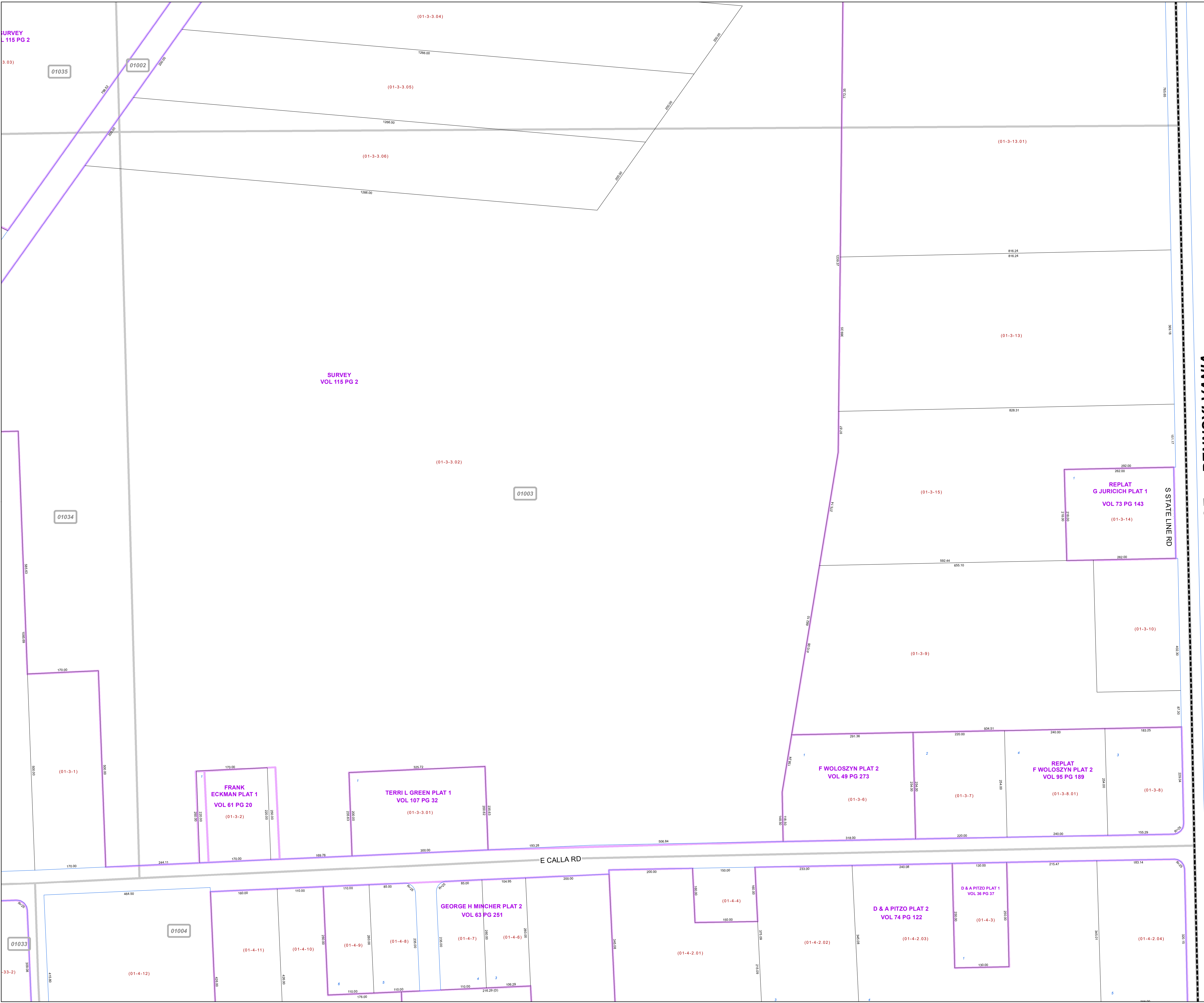


Print Date 1/14/2019

**LEGEND**

- COUNTY LINE
- TOWNSHIP LINE
- CITY LINE
- VILLAGE LINE
- PLAT OUTLINE
- PARCEL LINE
- OLD PARCEL LINE
- PHASE LINE
- ROAD ROW LINE
- RAILROAD ROW LINE
- PARCEL ID NUMBER
- LOT NUMBER
- PLAT NAME
- TAX MAP NUMBER

**SPRINGFIELD TOWNSHIP**  
**Index Map**



**STATE OF PENNSYLVANIA**

SURVEY  
 L 115 PG 2

SURVEY  
 VOL 115 PG 2

GEORGE H MINCHER PLAT 2  
 VOL 63 PG 251

FRANK  
 ECKMAN PLAT 1  
 VOL 61 PG 20

TERRI L GREEN PLAT 1  
 VOL 107 PG 32

F WOŁOSZYŃ PLAT 2  
 VOL 49 PG 273

REPLAT  
 F WOŁOSZYŃ PLAT 2  
 VOL 95 PG 189

D & A PITZO PLAT 1  
 VOL 36 PG 37

D & A PITZO PLAT 2  
 VOL 74 PG 122

REPLAT  
 G JURICICH PLAT 1  
 VOL 73 PG 143

01035

01002

01034

01003

01004

01033

01036

01035

01002

01034

01003

01033

01004