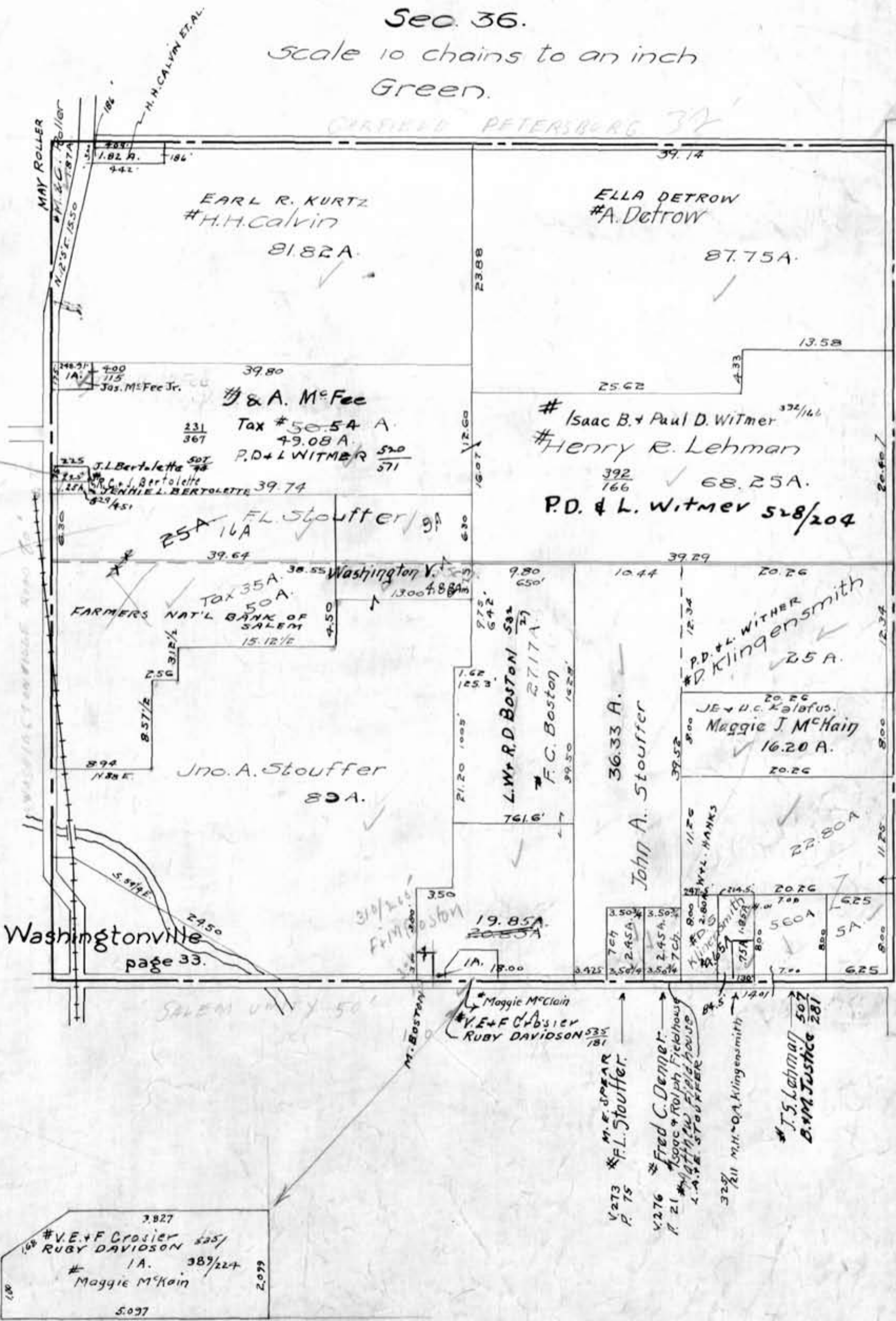


Boston Sec 36 24775 .42A

Sec. 36.

Scale 10 chains to an inch
Green.

CARTFIELD PETERSBURG 32



66) 730
66
90

John A. Stouffer
8/21/31

Washingtonville
page 33.

137
125
13.95
28.75

7.827
#V.E. & F. Crosier 525/
RUBY DAVIDSON
1A. 387/224
#Maggie McKain
5.077

Washingtonville School