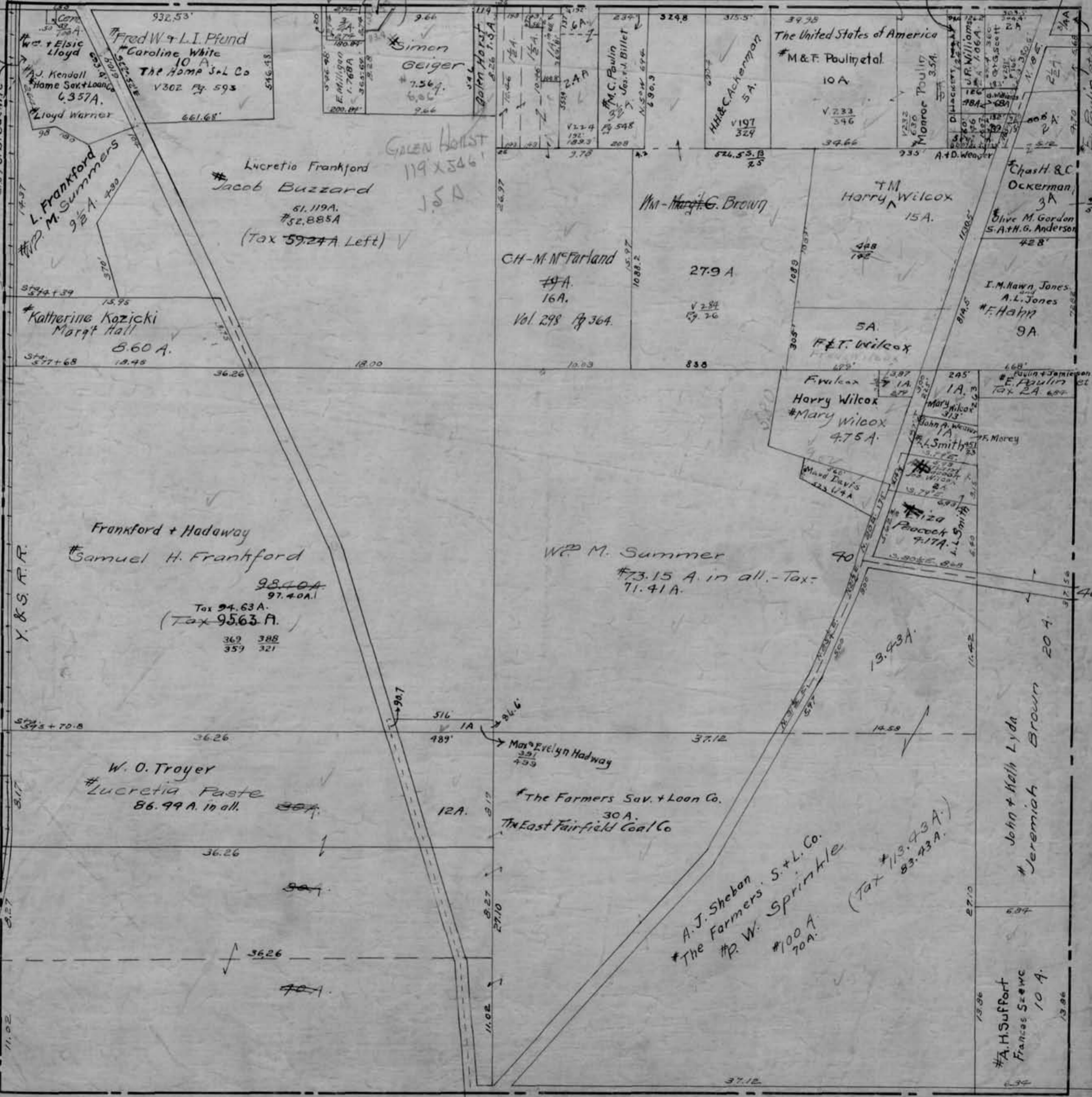


SEC. 12.

Scale 6 chains to an inch
BEAVER TWP.

B+S.M. Lambert

V. V. + Laura Keslar
425
148
2103 B. Buehrle



Y & S. R. R.

SOUTH AVE
E.C. + O. Webster

932.53'
Fred W. + L.I. Pfund
#Caroline White
10 A.
THE HOME S+L Co
V302 Pg 593
546.48
661.68'

Simon Geiger
#7.56
6.06
9.66

The United States of America
#M & F. Paulin et al.
10 A.
V.233
346
34.66

Monroe Paulin
3.5 A.
V.232
630
784

Lucretia Frankford
#Jacob Buzzard
61.119 A.
#52.885 A.
(Tax 59.24 A. Left) V

CH-M. McFarland
#9 A.
16 A.
Vol 298 Pg 364.

Harry Wilcox
15 A.
488
192

Katherine Kozicki
Margt Hall
8.60 A.
18.48

36.26
18.00
10.03
838

Harry Wilcox
#Mary Wilcox
4.75 A.

I.M. Hawn Jones
A.L. Jones
#F. Hahn
9 A.

Frankford + Hadaway
#Samuel H. Frankford
98.40 A.
97.40 A.1
Tax 94.63 A.
(Tax 95.63 A.)
362 388
359 321

W. M. Summer
#73.15 A. in all. - Tax:
71.41 A.

John + Kath Lyda
#Jeremiah Brown
20 A.

W. O. Troyer
#Lucretia Paste
86.99 A. in all.
12 A.

Max Evelyn Hadway
#The Farmers Sav. + Loan Co.
30 A.
#The East Fairfield Coal Co.

A.J. Sheban
#The Farmers S+L Co.
#P. W. Sprinkle
#100 A.
70 A.
(Tax #119.93 A.)
83.43 A.

36.26
11.02

37.12

13.06