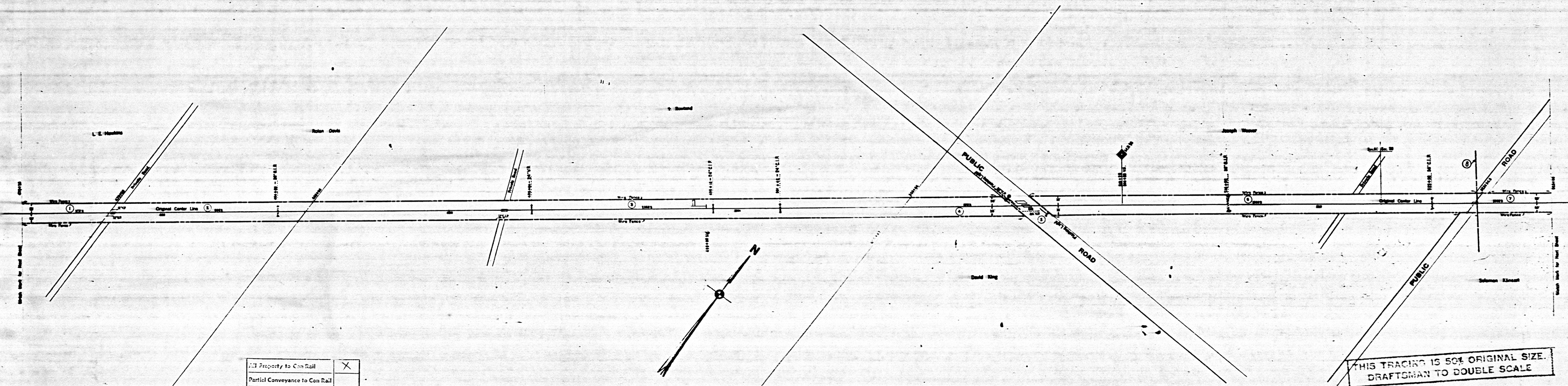


MAHONING COUNTY, OHIO
BERLIN TOWNSHIP
T. 1 N. R. 5 W

(152425 89.7 to 90.7)
OWNER: 310
VALUATION DIV. SHEET: 8422 - 10
REAL ESTATE REGION: 5



THIS TRACING IS 50% ORIGINAL SIZE.
DRAFTSMAN TO DOUBLE SCALE

Property to Con Rail	<input checked="" type="checkbox"/>
Partial Conveyance to Con Rail	<input type="checkbox"/>
No Property to Con Rail	<input type="checkbox"/>
Approved: <i>B</i> 25A Date: <i>6/12/24</i>	
Exceptions:	NONE
Area to Con Rail:	7.9 ± Ac

SCHEDULE OF SIDINGS AND CROSSOVERS

Side Track Number	Location	Class	Length in S.F.	Structure	Total	Remarks
11	Berlin Wessling	D				Revised 8-20-11

Correct as of Dec. 31st, 1955 - No Revision	Correct as of Dec. 31st, 1942 - No Revision	Correct as of Dec. 31st, 1929 - No Revision
Correct as of Dec. 31st, 1954 - No Revision	Correct as of Dec. 31st, 1941 - No Revision	Correct as of Dec. 31st, 1928 - No Revision
Correct as of Dec. 31st, 1953 - No Revision	Correct as of Dec. 31st, 1940 - No Revision	Correct as of Dec. 31st, 1927 - No Revision
Correct as of Dec. 31st, 1952 - No Revision	Correct as of Dec. 31st, 1939 - No Revision	Correct as of Dec. 31st, 1926 - No Revision
Correct as of Dec. 31st, 1951 - No Revision	Correct as of Dec. 31st, 1938 - No Revision	Correct as of Dec. 31st, 1925 - No Revision
Correct as of Dec. 31st, 1950 - No Revision	Correct as of Dec. 31st, 1937 - No Revision	Correct as of Dec. 31st, 1924 - No Revision
Correct as of Dec. 31st, 1949 - No Revision	Correct as of Dec. 31st, 1936 - No Revision	Correct as of Dec. 31st, 1923 - No Revision
Correct as of Dec. 31st, 1948 - No Revision	Correct as of Dec. 31st, 1935 - No Revision	Correct as of Dec. 31st, 1922 - No Revision
Correct as of Dec. 31st, 1947 - No Revision	Correct as of Dec. 31st, 1934 - No Revision	Correct as of Dec. 31st, 1921 - No Revision
Correct as of Dec. 31st, 1946 - No Revision	Correct as of Dec. 31st, 1933 - No Revision	Correct as of Dec. 31st, 1920 - No Revision
Correct as of Dec. 31st, 1945 - No Revision	Correct as of Dec. 31st, 1932 - No Revision	Correct as of Dec. 31st, 1919 - No Revision
Correct as of Dec. 31st, 1944 - No Revision	Correct as of Dec. 31st, 1931 - No Revision	Correct as of Dec. 31st, 1918 - No Revision
Correct as of Dec. 31st, 1943 - No Revision	Correct as of Dec. 31st, 1930 - No Revision	Correct as of Dec. 31st, 1917 - No Revision

Sheet No. 10, V. 6 Chgo. of Pittsburgh Youngstown & Ashtabula Railway from Survey Station 475+00 to Survey Station 528+00
Chief Draftsman

RIGHT OF WAY AND TRACK MAP
PITTSBURGH YOUNGSTOWN & ASHTABULA RY.
OPERATED BY THE
PENNSYLVANIA COMPANY
ERIE & ASHTABULA DIVISION - ALLIANCE BR.
STATION 475+20 TO STATION 528+00
SCALE: 1"=200'
OFFICE OF VALUATION ENGINEER
PITTSBURGH, PA.
JUNE 30, 1916