

MAHONING COUNTY OHIO.
T.2N.,R.1W.

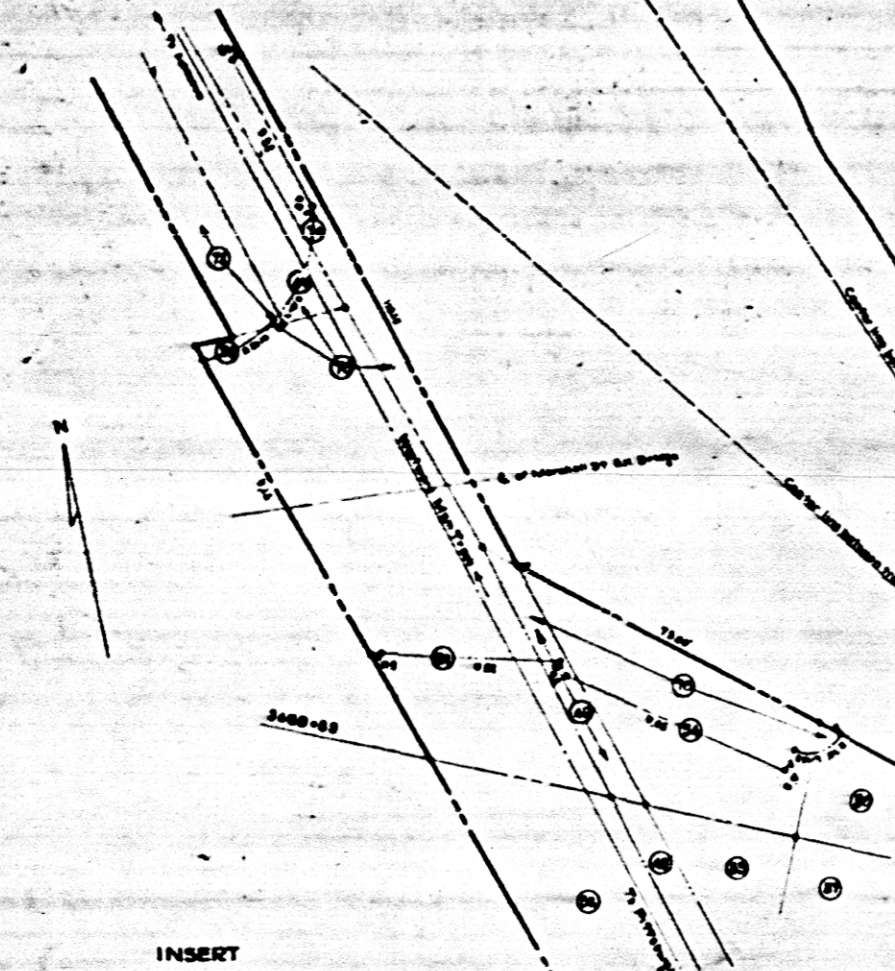
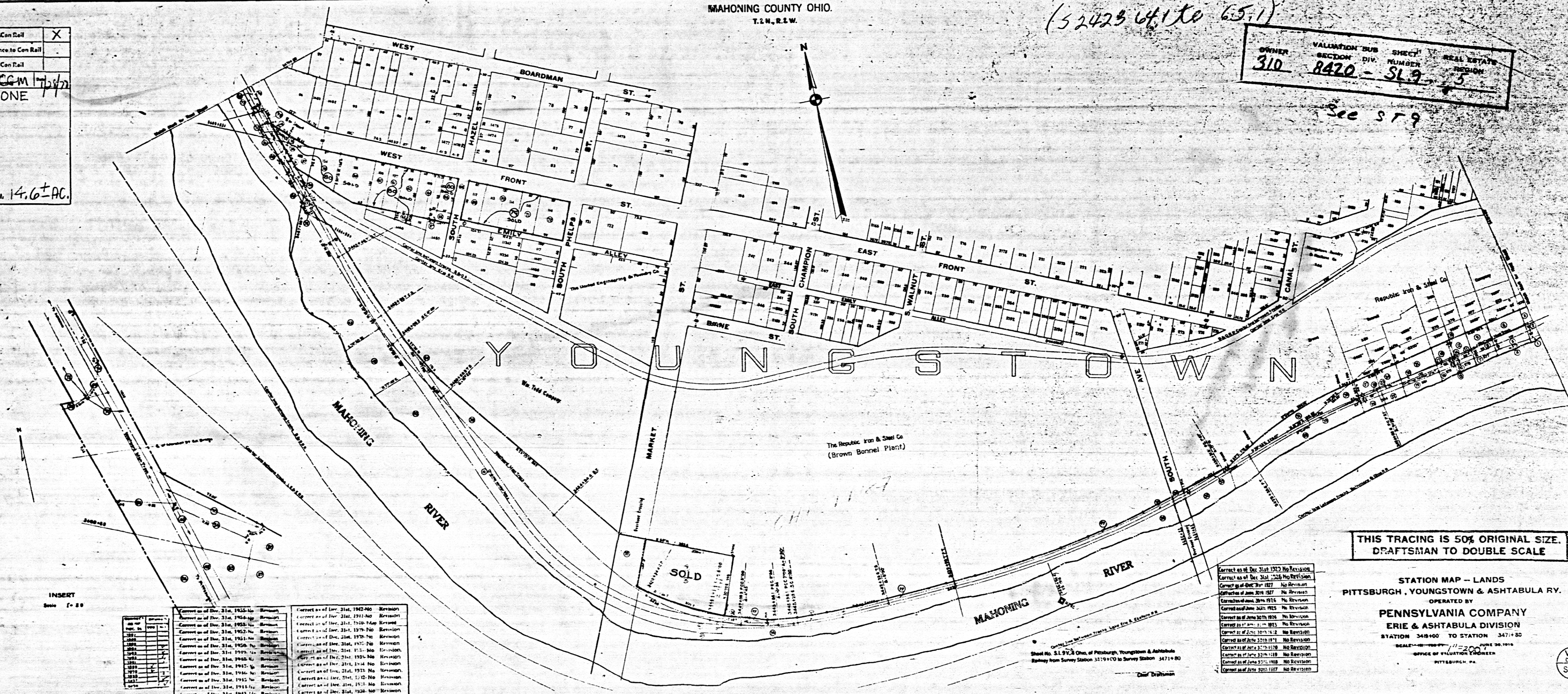
(52423 641 to 651)

OWNER	VALUATION SUB	SHEET	REAL ESTATE
310	8420	SL 9	5

See 579

Property to Con Rail	X
Partial Conveyance to Con Rail	
No Property to Con Rail	
Exceptions	NONE

Area to Con Rail. 14.6± AC.



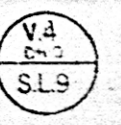
INSERT
Scale 1" = 20'

Correct as of Dec. 31st, 1922 - No Revision	Correct as of Dec. 31st, 1942 - No Revision
Correct as of Dec. 31st, 1926 - No Revision	Correct as of Dec. 31st, 1944 - No Revision
Correct as of Dec. 31st, 1927 - No Revision	Correct as of Dec. 31st, 1945 - No Revision
Correct as of Dec. 31st, 1928 - No Revision	Correct as of Dec. 31st, 1946 - No Revision
Correct as of Dec. 31st, 1929 - No Revision	Correct as of Dec. 31st, 1947 - No Revision
Correct as of Dec. 31st, 1930 - No Revision	Correct as of Dec. 31st, 1948 - No Revision
Correct as of Dec. 31st, 1931 - No Revision	Correct as of Dec. 31st, 1949 - No Revision
Correct as of Dec. 31st, 1932 - No Revision	Correct as of Dec. 31st, 1950 - No Revision
Correct as of Dec. 31st, 1933 - No Revision	Correct as of Dec. 31st, 1951 - No Revision
Correct as of Dec. 31st, 1934 - No Revision	Correct as of Dec. 31st, 1952 - No Revision
Correct as of Dec. 31st, 1935 - No Revision	Correct as of Dec. 31st, 1953 - No Revision
Correct as of Dec. 31st, 1936 - No Revision	Correct as of Dec. 31st, 1954 - No Revision
Correct as of Dec. 31st, 1937 - No Revision	Correct as of Dec. 31st, 1955 - No Revision
Correct as of Dec. 31st, 1938 - No Revision	Correct as of Dec. 31st, 1956 - No Revision
Correct as of Dec. 31st, 1939 - No Revision	Correct as of Dec. 31st, 1957 - No Revision
Correct as of Dec. 31st, 1940 - No Revision	Correct as of Dec. 31st, 1958 - No Revision
Correct as of Dec. 31st, 1941 - No Revision	Correct as of Dec. 31st, 1959 - No Revision
Correct as of Dec. 31st, 1942 - No Revision	Correct as of Dec. 31st, 1960 - No Revision

Correct as of Dec. 31st, 1922 - No Revision
Correct as of Dec. 31st, 1926 - No Revision
Correct as of Dec. 31st, 1927 - No Revision
Correct as of Dec. 31st, 1928 - No Revision
Correct as of Dec. 31st, 1929 - No Revision
Correct as of Dec. 31st, 1930 - No Revision
Correct as of Dec. 31st, 1931 - No Revision
Correct as of Dec. 31st, 1932 - No Revision
Correct as of Dec. 31st, 1933 - No Revision
Correct as of Dec. 31st, 1934 - No Revision
Correct as of Dec. 31st, 1935 - No Revision
Correct as of Dec. 31st, 1936 - No Revision
Correct as of Dec. 31st, 1937 - No Revision
Correct as of Dec. 31st, 1938 - No Revision
Correct as of Dec. 31st, 1939 - No Revision
Correct as of Dec. 31st, 1940 - No Revision

THIS TRACING IS 50% ORIGINAL SIZE.
DRAFTSMAN TO DOUBLE SCALE

STATION MAP - LANDS
PITTSBURGH, YOUNGSTOWN & ASHTABULA RY.
OPERATED BY
PENNSYLVANIA COMPANY
ERIE & ASHTABULA DIVISION
STATION 3418+00 TO STATION 3471+80
SCALE 1" = 200' JUNE 30, 1916
OFFICE OF VALUATION ENGINEERS
PITTSBURGH, PA.



Sheet No. S.L.9.A Ohio, of Pittsburgh, Youngstown & Ashtabula
Railway from Survey Station 3419+00 to Survey Station 3471+80
Chief Draftsman

MAHONING COUNTY, OHIO.
T.2N., R.2W.

OWNER VALUATION SUB- SHEET REAL ESTATE
310 8420 - 579 DIV. NUMBER REGION
5

Correct as of Dec. 31st, 1955-Map Revised	Correct as of Dec. 31st, 1945-Map Revised
Correct as of Dec. 31st, 1954-Map Revised	Correct as of Dec. 31st, 1944-Map Revised
Correct as of Dec. 31st, 1953-Map Revised	Correct as of Dec. 31st, 1943-Map Revised
Correct as of Dec. 31st, 1952-Map Revised	Correct as of Dec. 31st, 1942-Map Revised
Correct as of Dec. 31st, 1951-Map Revised	Correct as of Dec. 31st, 1941-Map Revised
Correct as of Dec. 31st, 1950-Map Revised	Correct as of Dec. 31st, 1940-Map Revised
Correct as of Dec. 31st, 1949-Map Revised	Correct as of Dec. 31st, 1939-Map Revised
Correct as of Dec. 31st, 1948-Map Revised	Correct as of Dec. 31st, 1938-Map Revised
Correct as of Dec. 31st, 1947-Map Revised	Correct as of Dec. 31st, 1937-Map Revised
Correct as of Dec. 31st, 1946-Map Revised	Correct as of Dec. 31st, 1936-Map Revised
Correct as of Dec. 31st, 1945-Map Revised	Correct as of Dec. 31st, 1935-Map Revised
Correct as of Dec. 31st, 1944-Map Revised	Correct as of Dec. 31st, 1934-Map Revised
Correct as of Dec. 31st, 1943-Map Revised	Correct as of Dec. 31st, 1933-Map Revised
Correct as of Dec. 31st, 1942-Map Revised	Correct as of Dec. 31st, 1932-Map Revised
Correct as of Dec. 31st, 1941-Map Revised	Correct as of Dec. 31st, 1931-Map Revised
Correct as of Dec. 31st, 1940-Map Revised	Correct as of Dec. 31st, 1930-Map Revised

SCHEDULE OF BRANCH AND CROSSOVERS

Station	Length	Class	Tr. Co.	Private	Total	Remarks
1	0.10				0.10	Charged with Tr. B. RR
2	0.10				0.10	Revised 1915
3	0.10				0.10	Revised 1917
4	0.10				0.10	Revised 1917
5	0.10				0.10	Revised 1917
6	0.10				0.10	Revised 1917
7	0.10				0.10	Revised 1917
8	0.10				0.10	Revised 1917
9	0.10				0.10	Revised 1917
10	0.10				0.10	Revised 1917
11	0.10				0.10	Revised 1917
12	0.10				0.10	Revised 1917
13	0.10				0.10	Revised 1917
14	0.10				0.10	Revised 1917
15	0.10				0.10	Revised 1917
16	0.10				0.10	Revised 1917
17	0.10				0.10	Revised 1917
18	0.10				0.10	Revised 1917
19	0.10				0.10	Revised 1917
20	0.10				0.10	Revised 1917
21	0.10				0.10	Revised 1917
22	0.10				0.10	Revised 1917
23	0.10				0.10	Revised 1917
24	0.10				0.10	Revised 1917
25	0.10				0.10	Revised 1917
26	0.10				0.10	Revised 1917
27	0.10				0.10	Revised 1917
28	0.10				0.10	Revised 1917
29	0.10				0.10	Revised 1917
30	0.10				0.10	Revised 1917
31	0.10				0.10	Revised 1917
32	0.10				0.10	Revised 1917
33	0.10				0.10	Revised 1917
34	0.10				0.10	Revised 1917
35	0.10				0.10	Revised 1917
36	0.10				0.10	Revised 1917
37	0.10				0.10	Revised 1917
38	0.10				0.10	Revised 1917
39	0.10				0.10	Revised 1917
40	0.10				0.10	Revised 1917
41	0.10				0.10	Revised 1917
42	0.10				0.10	Revised 1917
43	0.10				0.10	Revised 1917
44	0.10				0.10	Revised 1917
45	0.10				0.10	Revised 1917
46	0.10				0.10	Revised 1917
47	0.10				0.10	Revised 1917
48	0.10				0.10	Revised 1917
49	0.10				0.10	Revised 1917
50	0.10				0.10	Revised 1917
51	0.10				0.10	Revised 1917
52	0.10				0.10	Revised 1917
53	0.10				0.10	Revised 1917
54	0.10				0.10	Revised 1917
55	0.10				0.10	Revised 1917
56	0.10				0.10	Revised 1917
57	0.10				0.10	Revised 1917

Correct as of Dec. 31st 1913 Map Revised
Correct as of Dec. 31st 1914 Map Revised
Correct as of Dec. 31st 1917 No Revision
Correct as of June 30th 1927 No Revision
Correct as of June 30th 1928 Map Revised
Correct as of June 30th 1929 No Revision
Correct as of June 30th 1934 No Revision
Correct as of June 30th 1935 No Revision
Correct as of June 30th 1936 Map Revised
Correct as of June 30th 1937 No Revision
Correct as of June 30th 1938 No Revision
Correct as of June 30th 1939 No Revision
Correct as of June 30th 1940 No Revision
Correct as of June 30th 1941 No Revision
Correct as of June 30th 1942 No Revision
Correct as of June 30th 1943 No Revision
Correct as of June 30th 1944 No Revision
Correct as of June 30th 1945 No Revision
Correct as of June 30th 1946 No Revision
Correct as of June 30th 1947 No Revision
Correct as of June 30th 1948 No Revision
Correct as of June 30th 1949 No Revision
Correct as of June 30th 1950 No Revision
Correct as of June 30th 1951 No Revision
Correct as of June 30th 1952 No Revision
Correct as of June 30th 1953 No Revision
Correct as of June 30th 1954 No Revision
Correct as of June 30th 1955 No Revision

48-01150	3
48-01804	4
48-01804 B	5
48-01804 B MAHONING	6
48-01790	7

AT 25 M.C.

SEE LAND MAP

THIS TRACING IS 50% ORIGINAL SIZE.
DRAFTSMAN TO DOUBLE SCALE

STATION MAP - TRACKS AND STRUCTURES
PITTSBURGH, YOUNGSTOWN & ASHTABULA RY.
OPERATED BY
PENNSYLVANIA COMPANY
ERIE & ASHTABULA DIVISION
STATION 3419+00 TO STATION 3471+00
SCALE: 1 IN. = 100 FT. JUNE 30, 1918
OFFICE OF VALUATION ENGINEER
PITTSBURGH, PA.
Chief Draftsman

Sheet No. 8, 9, 4 Ohio, of Pittsburgh, Youngstown & Ashtabula
Railway from Survey Station 34194 00 to Survey Station 3714 80

