

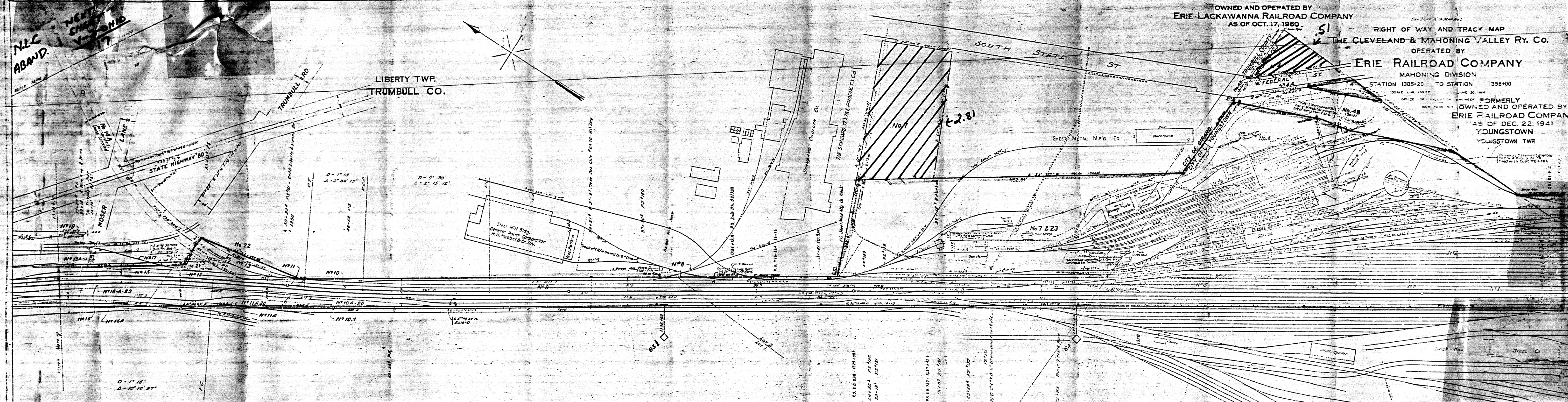
OWNED AND OPERATED BY
ERIE-LACKAWANNA RAILROAD COMPANY
AS OF OCT. 17, 1960

RIGHT OF WAY AND TRACK MAP
THE CLEVELAND & MAHONING VALLEY RY. CO.

OPERATED BY
ERIE RAILROAD COMPANY

MAHONING DIVISION
STATION 1305+20 TO STATION 1358+00

FORMERLY OWNED AND OPERATED BY
ERIE RAILROAD COMPANY
AS OF DEC. 22, 1941
YOUNGSTOWN TWP



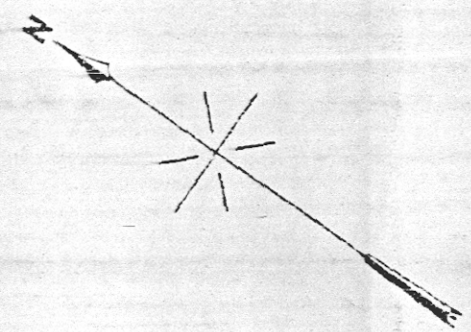
REVISION RECORD				REVISION RECORD				REVISION RECORD				REVISION RECORD			
Date	Authority	Description	Sheet	Date	Authority	Description	Sheet	Date	Authority	Description	Sheet	Date	Authority	Description	Sheet
3-2-54	C-2450	DWA	1305+20	3-2-54	C-2450	DWA	1305+20	3-2-54	C-2450	DWA	1305+20	3-2-54	C-2450	DWA	1305+20
3-2-54	C-2450	DWA	1305+20	3-2-54	C-2450	DWA	1305+20	3-2-54	C-2450	DWA	1305+20	3-2-54	C-2450	DWA	1305+20
3-2-54	C-2450	DWA	1305+20	3-2-54	C-2450	DWA	1305+20	3-2-54	C-2450	DWA	1305+20	3-2-54	C-2450	DWA	1305+20
3-2-54	C-2450	DWA	1305+20	3-2-54	C-2450	DWA	1305+20	3-2-54	C-2450	DWA	1305+20	3-2-54	C-2450	DWA	1305+20
3-2-54	C-2450	DWA	1305+20	3-2-54	C-2450	DWA	1305+20	3-2-54	C-2450	DWA	1305+20	3-2-54	C-2450	DWA	1305+20
3-2-54	C-2450	DWA	1305+20	3-2-54	C-2450	DWA	1305+20	3-2-54	C-2450	DWA	1305+20	3-2-54	C-2450	DWA	1305+20
3-2-54	C-2450	DWA	1305+20	3-2-54	C-2450	DWA	1305+20	3-2-54	C-2450	DWA	1305+20	3-2-54	C-2450	DWA	1305+20
3-2-54	C-2450	DWA	1305+20	3-2-54	C-2450	DWA	1305+20	3-2-54	C-2450	DWA	1305+20	3-2-54	C-2450	DWA	1305+20
3-2-54	C-2450	DWA	1305+20	3-2-54	C-2450	DWA	1305+20	3-2-54	C-2450	DWA	1305+20	3-2-54	C-2450	DWA	1305+20

NOTE: Land shown shaded with improvements hereon are in E.P.D. V.S. 2A-Ohio (Part of 12-18)

332 AREA
380 AREA
Date 12/27/77
380
3-8-79

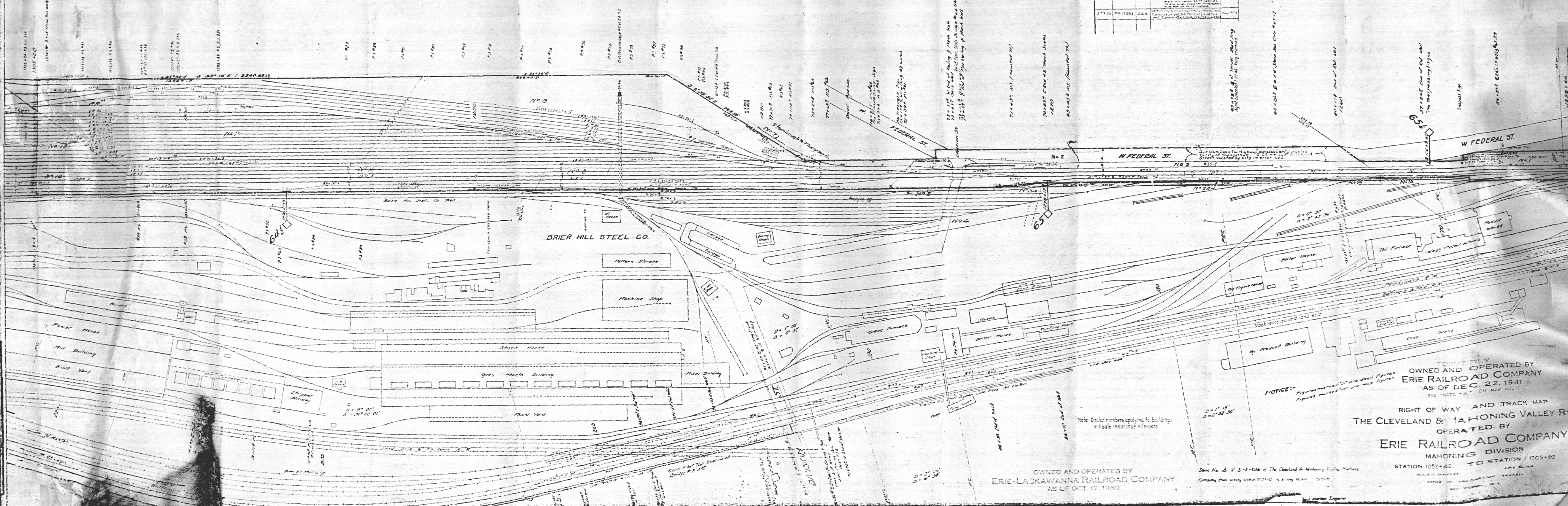
(8382 63.3 To 64.3)

MAHONING CO., OHIO



REVISION RECORD				REVISION RECORD			
Date	Author	Description	Date	Author	Description	Date	Author
1-2-47	C.W.K.	...	1-2-47	C.W.K.	...	1-2-47	C.W.K.
3-24-47	J.D.C.	...	3-24-47	J.D.C.	...	3-24-47	J.D.C.
4-24-47	C.W.K.	...	4-24-47	C.W.K.	...	4-24-47	C.W.K.
5-24-47	C.W.K.	...	5-24-47	C.W.K.	...	5-24-47	C.W.K.
6-24-47	C.W.K.	...	6-24-47	C.W.K.	...	6-24-47	C.W.K.
7-24-47	C.W.K.	...	7-24-47	C.W.K.	...	7-24-47	C.W.K.
8-24-47	C.W.K.	...	8-24-47	C.W.K.	...	8-24-47	C.W.K.
9-24-47	C.W.K.	...	9-24-47	C.W.K.	...	9-24-47	C.W.K.
10-24-47	C.W.K.	...	10-24-47	C.W.K.	...	10-24-47	C.W.K.
11-24-47	C.W.K.	...	11-24-47	C.W.K.	...	11-24-47	C.W.K.
12-24-47	C.W.K.	...	12-24-47	C.W.K.	...	12-24-47	C.W.K.
1-24-48	C.W.K.	...	1-24-48	C.W.K.	...	1-24-48	C.W.K.
2-24-48	C.W.K.	...	2-24-48	C.W.K.	...	2-24-48	C.W.K.
3-24-48	C.W.K.	...	3-24-48	C.W.K.	...	3-24-48	C.W.K.
4-24-48	C.W.K.	...	4-24-48	C.W.K.	...	4-24-48	C.W.K.
5-24-48	C.W.K.	...	5-24-48	C.W.K.	...	5-24-48	C.W.K.
6-24-48	C.W.K.	...	6-24-48	C.W.K.	...	6-24-48	C.W.K.
7-24-48	C.W.K.	...	7-24-48	C.W.K.	...	7-24-48	C.W.K.
8-24-48	C.W.K.	...	8-24-48	C.W.K.	...	8-24-48	C.W.K.
9-24-48	C.W.K.	...	9-24-48	C.W.K.	...	9-24-48	C.W.K.
10-24-48	C.W.K.	...	10-24-48	C.W.K.	...	10-24-48	C.W.K.
11-24-48	C.W.K.	...	11-24-48	C.W.K.	...	11-24-48	C.W.K.
12-24-48	C.W.K.	...	12-24-48	C.W.K.	...	12-24-48	C.W.K.
1-24-49	C.W.K.	...	1-24-49	C.W.K.	...	1-24-49	C.W.K.
2-24-49	C.W.K.	...	2-24-49	C.W.K.	...	2-24-49	C.W.K.
3-24-49	C.W.K.	...	3-24-49	C.W.K.	...	3-24-49	C.W.K.
4-24-49	C.W.K.	...	4-24-49	C.W.K.	...	4-24-49	C.W.K.
5-24-49	C.W.K.	...	5-24-49	C.W.K.	...	5-24-49	C.W.K.
6-24-49	C.W.K.	...	6-24-49	C.W.K.	...	6-24-49	C.W.K.
7-24-49	C.W.K.	...	7-24-49	C.W.K.	...	7-24-49	C.W.K.
8-24-49	C.W.K.	...	8-24-49	C.W.K.	...	8-24-49	C.W.K.
9-24-49	C.W.K.	...	9-24-49	C.W.K.	...	9-24-49	C.W.K.
10-24-49	C.W.K.	...	10-24-49	C.W.K.	...	10-24-49	C.W.K.
11-24-49	C.W.K.	...	11-24-49	C.W.K.	...	11-24-49	C.W.K.
12-24-49	C.W.K.	...	12-24-49	C.W.K.	...	12-24-49	C.W.K.
1-24-50	C.W.K.	...	1-24-50	C.W.K.	...	1-24-50	C.W.K.
2-24-50	C.W.K.	...	2-24-50	C.W.K.	...	2-24-50	C.W.K.
3-24-50	C.W.K.	...	3-24-50	C.W.K.	...	3-24-50	C.W.K.
4-24-50	C.W.K.	...	4-24-50	C.W.K.	...	4-24-50	C.W.K.
5-24-50	C.W.K.	...	5-24-50	C.W.K.	...	5-24-50	C.W.K.
6-24-50	C.W.K.	...	6-24-50	C.W.K.	...	6-24-50	C.W.K.
7-24-50	C.W.K.	...	7-24-50	C.W.K.	...	7-24-50	C.W.K.
8-24-50	C.W.K.	...	8-24-50	C.W.K.	...	8-24-50	C.W.K.
9-24-50	C.W.K.	...	9-24-50	C.W.K.	...	9-24-50	C.W.K.
10-24-50	C.W.K.	...	10-24-50	C.W.K.	...	10-24-50	C.W.K.
11-24-50	C.W.K.	...	11-24-50	C.W.K.	...	11-24-50	C.W.K.
12-24-50	C.W.K.	...	12-24-50	C.W.K.	...	12-24-50	C.W.K.

"B" AREA 2 Acres
 "C" AREA 2.4 Acres
 Date 3-8-77



OWNED AND OPERATED BY
 ERIE-LACKAWANNA RAILROAD COMPANY
 AS OF OCT. 17, 1950

Station No. 4 V.S. 2-01e of The Cleveland & Mahoning Valley Railway
 Company from survey station 221242 in survey station 125240

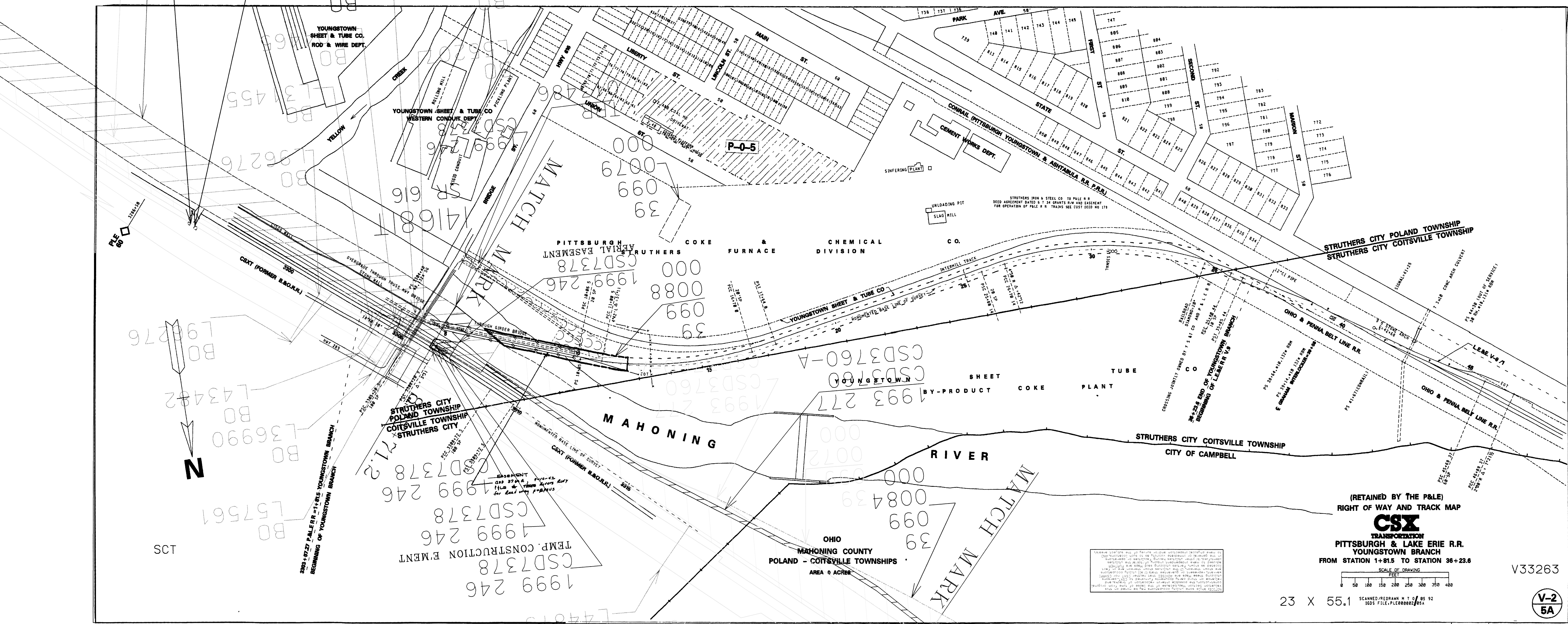
FORMERLY
 OWNED AND OPERATED BY
 ERIE RAILROAD COMPANY
 AS OF DEC. 22, 1941
 SEE INDEX MAP ON MAP NO. 1
 RIGHT OF WAY AND TRACK MAP
 THE CLEVELAND & MAHONING VALLEY RY. CO.
 OPERATED BY
 ERIE RAILROAD COMPANY
 MAHONING DIVISION
 STATION 1252+40 TO STATION 1305+00
 SCALE: HORIZONTAL
 OFFICE OF VERTICAL ENGINEERS
 CLEVELAND, OHIO

NOTICE: Figures marked with one dash figures indicate insurance numbers
 Figures marked with two dashes figures indicate insurance numbers

(8382 64.3 To 65.3)

CSD3760-A
1993 277
014743
PLE

L34269
BO



SCT

1999 246
CSD7378
TEMP. CONSTRUCTION EMENT

OHIO
MAHONING COUNTY
POLAND - COITSVILLE TOWNSHIPS
AREA 0 ACRES

These drawings are to be used only for the purpose intended and are not to be used for any other purpose. The engineer and drafter assume no responsibility for any errors or omissions in these drawings. The user of these drawings is advised that they are not to be used for any purpose other than that intended.

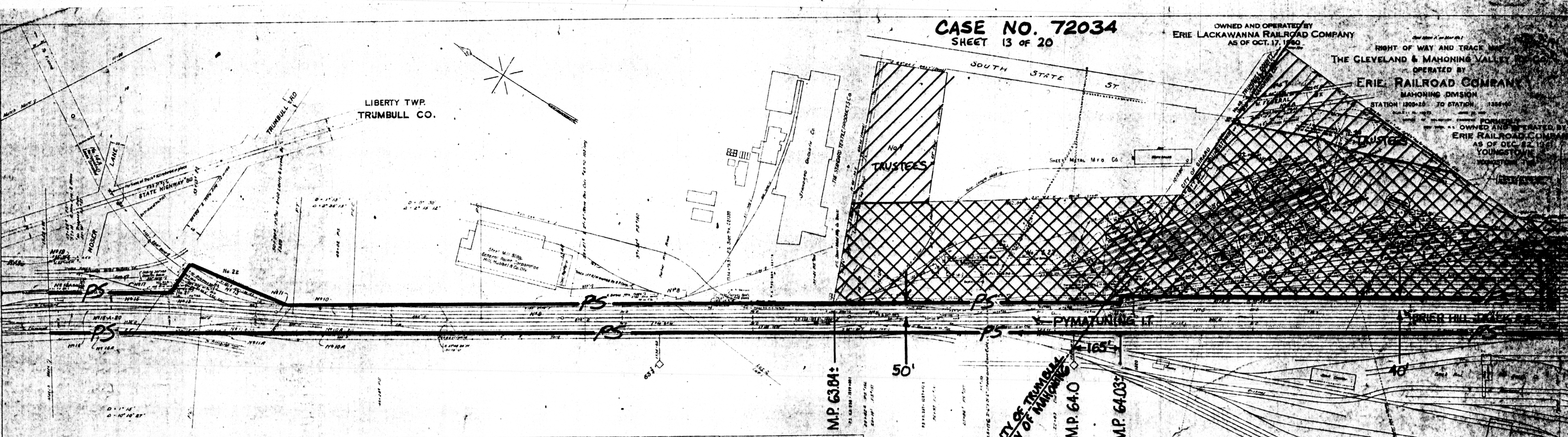
(RETAINED BY THE P&LE)
RIGHT OF WAY AND TRACK MAP
CSX
TRANSPORTATION
PITTSBURGH & LAKE ERIE R.R.
YOUNGSTOWN BRANCH
FROM STATION 1+81.5 TO STATION 36+23.6

SCALE OF DRAWING
FEET
0 50 100 150 200 250 300 350 400

23 X 55.1 SCANNED PROGRAM N T O 85 92
1005 FILE:PLR0002/0A

V33263

V-2
5A



REVISION RECORD				REVISION RECORD				REVISION RECORD				REVISION RECORD				REVISION RECORD				
Date	Authority	Revised	Description	Date	Authority	Revised	Description	Date	Authority	Revised	Description	Date	Authority	Revised	Description	Date	Authority	Revised	Description	
2-23-00	2874	M S	...	2-2-45	C-21021	J.D.C.	...	2-2-50	C-3123	C.W.K.	...	2-13-21	1111	E.S.M.	...	2-13-21	1111	E.S.M.	...	
3-9-00	PR-13246	M S	...	2-7-45	PR-5867	J.D.C.	...	3-18-30	L.W.T.	C.W.K.	...	7-18-22	1702	E.D.M.	...	7-18-22	1702	E.D.M.	...	
4-23-00	C-28497	M S	...	4-8-45	C-20347	J.D.C.	...	10-31-43	PR-4447	C.W.K.	...	7-22-22	1602	A.B.B.	...	7-22-22	1602	A.B.B.	...	
7-3-00	C-27418	M S	...	7-18-45	PR-4639	C.W.K.	...	1-22-30	PR-4447	C.W.K.	...	6-12-22	930	A.B.B.	...	6-12-22	930	A.B.B.	...	
1-1-00	PR-11924	M S	...	2-18-46	C-21550	C.W.K.	...	1-26-29	PR-4447	C.W.K.	...	8-14-22	2002	A.B.B.	...	8-14-22	2002	A.B.B.	...	
1-16-74	PR-10933	A.R.C.	...	2-14-46	C-21550	C.W.K.	...	1-26-29	PR-4447	C.W.K.	...	1-27-23	3636	A.B.B.	...	1-27-23	3636	A.B.B.	...	
1-22-74	C-19003	B.D.K.	...	2-25-46	C-21390	J.D.C.	...	10-4-31	C-10467	C.W.K.	...	10-10-23	3038	C.W.K.	...	10-10-23	3038	C.W.K.	...	
4-20-74	PR-11977	M S	...	1-18-46	C-21390	J.D.C.	...	1-18-45	PR-4447	C.W.K.	...	10-11-23	4522	K.E.B.	...	10-11-23	4522	K.E.B.	...	
3-24-74	C-27780	A.R.C.	...	5-14-47	C-21557	J.D.C.	...	10-8-46	C-10032	C.W.K.	...	9-18-23	2586	C.W.K.	...	9-18-23	2586	C.W.K.	...	
3-23-74	PR-11576	J.A.S.	...	8-29-47	PR-10119	C.W.K.	...	2-15-46	PR-7628	C.A.N.	...	8-21-35	1739	J.A.Y.	...	8-21-35	1739	J.A.Y.	...	
				11-5-47	C-21605	J.D.C.	...	2-23-46	PR-7628	C.W.K.	...	1-14-36	3553	J.A.Y.	...	1-14-36	3553	J.A.Y.	...	
				3-12-54	C-25136	C.W.K.	...	3-27-42	PR-7628	J.D.C.	...	4-17-31	1381	L.A.T.	...	4-17-31	1381	L.A.T.	...	
				4-18-48	EP-128	C.W.K.	...	1-20-46	C-22647	J.D.C.	...	5-12-25	4144	J.A.Y.	...	5-12-25	4144	J.A.Y.	...	
				1-20-50	C-24203	C.W.K.	...	6-16-43	C-6082	J.D.C.	...	9-12-25	4144	J.A.Y.	...	9-12-25	4144	J.A.Y.	...	
				11-27-50	C-22399	J.D.C.	...	6-16-43	C-6082	J.D.C.	...	3-27-26	3840	C.A.N.	...	3-27-26	3840	C.A.N.	...	
				11-9-50			...	7-24-43	C-6556	J.D.C.	...	1-30-37	4144	J.A.Y.	...	1-30-37	4144	J.A.Y.	...	
				7-1-51			...	7-24-43	C-6556	J.D.C.	...	1-30-37	4144	J.A.Y.	...	1-30-37	4144	J.A.Y.	...	
				4-18-52	C-23148	C.W.K.	...	7-24-43	C-6556	J.D.C.	...	4-23-29	2627	C-7972	C.W.K.	...	4-23-29	2627	C-7972	C.W.K.
				4-18-52	C-23148	C.W.K.	...	7-24-43	C-6556	J.D.C.	...	4-23-29	2627	C-7972	C.W.K.	...	4-23-29	2627	C-7972	C.W.K.
				4-18-52	C-23148	C.W.K.	...	7-24-43	C-6556	J.D.C.	...	4-23-29	2627	C-7972	C.W.K.	...	4-23-29	2627	C-7972	C.W.K.
				4-18-52	C-23148	C.W.K.	...	7-24-43	C-6556	J.D.C.	...	4-23-29	2627	C-7972	C.W.K.	...	4-23-29	2627	C-7972	C.W.K.
				4-18-52	C-23148	C.W.K.	...	7-24-43	C-6556	J.D.C.	...	4-23-29	2627	C-7972	C.W.K.	...	4-23-29	2627	C-7972	C.W.K.
				4-18-52	C-23148	C.W.K.	...	7-24-43	C-6556	J.D.C.	...	4-23-29	2627	C-7972	C.W.K.	...	4-23-29	2627	C-7972	C.W.K.
				4-18-52	C-23148	C.W.K.	...	7-24-43	C-6556	J.D.C.	...	4-23-29	2627	C-7972	C.W.K.	...	4-23-29	2627	C-7972	C.W.K.
				4-18-52	C-23148	C.W.K.	...	7-24-43	C-6556	J.D.C.	...	4-23-29	2627	C-7972	C.W.K.	...	4-23-29	2627	C-7972	C.W.K.
				4-18-52	C-23148	C.W.K.	...	7-24-43	C-6556	J.D.C.	...	4-23-29	2627	C-7972	C.W.K.	...	4-23-29	2627	C-7972	C.W.K.
				4-18-52	C-23148	C.W.K.	...	7-24-43	C-6556	J.D.C.	...	4-23-29	2627	C-7972	C.W.K.	...	4-23-29	2627	C-7972	C.W.K.
				4-18-52	C-23148	C.W.K.	...	7-24-43	C-6556	J.D.C.	...	4-23-29	2627	C-7972	C.W.K.	...	4-23-29	2627	C-7972	C.W.K.
				4-18-52	C-23148	C.W.K.	...	7-24-43	C-6556	J.D.C.	...	4-23-29	2627	C-7972	C.W.K.	...	4-23-29	2627	C-7972	C.W.K.
				4-18-52	C-23148	C.W.K.	...	7-24-43	C-6556	J.D.C.	...	4-23-29	2627	C-7972	C.W.K.	...	4-23-29	2627	C-7972	C.W.K.
				4-18-52	C-23148	C.W.K.	...	7-24-43	C-6556	J.D.C.	...	4-23-29	2627	C-7972	C.W.K.	...	4-23-29	2627	C-7972	C.W.K.
				4-18-52	C-23148	C.W.K.	...	7-24-43	C-6556	J.D.C.	...	4-23-29	2627	C-7972	C.W.K.	...	4-23-29	2627	C-7972	C.W.K.
				4-18-52	C-23148	C.W.K.	...	7-24-43	C-6556	J.D.C.	...	4-23-29	2627	C-7972	C.W.K.	...	4-23-29	2627	C-7972	C.W.K.
				4-18-52	C-23148	C.W.K.	...	7-24-43	C-6556	J.D.C.	...	4-23-29	2627	C-7972	C.W.K.	...	4-23-29	2627	C-7972	C.W.K.
				4-18-52	C-23148	C.W.K.	...	7-24-43	C-6556	J.D.C.	...	4-23-29	2627	C-7972	C.W.K.	...	4-23-29	2627	C-7972	C.W.K.
				4-18-52	C-23148	C.W.K.	...	7-24-43	C-6556	J.D.C.	...	4-23-29	2627	C-7972	C.W.K.	...	4-23-29	2627	C-7972	C.W.K.
				4-18-52	C-23148	C.W.K.	...	7-24-43	C-6556	J.D.C.	...	4-23-29	2627	C-7972	C.W.K.	...	4-23-29	2627	C-7972	C.W.K.
				4-18-52	C-23148	C.W.K.	...	7-24-43	C-6556	J.D.C.	...	4-23-29	2627	C-7972	C.W.K.	...	4-23-29	2627	C-7972	C.W.K.
				4-18-52	C-23148	C.W.K.	...	7-24-43	C-6556	J.D.C.	...	4-23-29	2627	C-7972	C.W.K.	...	4-23-29	2627	C-7972	C.W.K.
				4-18-52	C-23148	C.W.K.	...	7-24-43	C-6556	J.D.C.	...	4-23-29	2627	C-7972	C.W.K.	...	4-23-29	2627	C-7972	C.W.K.
				4-18-52	C-23148	C.W.K.	...	7-24-43	C-6556	J.D.C.	...	4-23-29	2627	C-7972	C.W.K.	...	4-23-29	2627	C-7972	C.W.K.
				4-18-52	C-23148	C.W.K.	...	7-24-43	C-6556	J.D.C.	...	4-23-29	2627	C-7972	C.W.K.	...	4-23-29	2627	C-7972	C.W.K.
				4-18-52	C-23148	C.W.K.	...	7-24-43	C-6556	J.D.C.	...	4-23-29	2627	C-7972	C.W.K.	...	4-23-29	2627	C-7972	C.W.K.
				4-18-52	C-23148	C.W.K.	...	7-24-43	C-6556	J.D.C.	...	4-23-29	2627	C-7972	C.W.K.	...	4-23-29	2627	C-7972	C.W.K.
				4-18-52	C-23148	C.W.K.	...	7-24-43	C-6556	J.D.C.	...	4-23-29	2627	C-7972	C.W.K.	...	4-23-29	2627	C-7972	C.W.K.
				4-18-52	C-23148	C.W.K.	...	7-24-43	C-6556	J.D.C.	...	4-23-29	2627	C-7972	C.W.K.	...	4-23-29	2627	C-7972	C.W.K.
				4-18-52	C-23148	C.W.K.	...	7-24-43	C-6556	J.D.C.	...	4-23-29	2627	C-7972	C.W.K.	...	4-23-29	2627	C-7972	C.W.K.
				4-18-52	C-23148	C.W.K.	...	7-24-43	C-6556	J.D.C.	...	4-23-29	2627	C-7972	C.W.K.	...	4-23-29	2627	C-7972	C.W.K.
				4-18-52	C-23148	C.W.K.	...	7-24-43	C-6556	J.D.C.	...	4-23-29	2627	C-7972	C.W.K.	...	4-23-29	2627	C-7972	C.W.K.
				4-18-52	C-23148	C.W.K.	...	7-24-43	C-6556	J.D.C.	...	4-23-29	2627	C-7972	C.W.K.	...	4-23-29	2627	C-7972	C.W.K.
				4-18-52	C-23148	C.W.K.	...	7-24-43	C-6556	J.D.C.	...	4-23-29	2627	C-7972	C.W.K.	...	4-23-29	2627	C-7972	C.W.K.
				4-18-52	C-23148	C.W.K.	...	7-24-43	C-6556	J.D.C.	...	4-23-29	2627	C-7972	C.W.K.	...	4-23-29	2627	C-7972	C.W.K.
				4-18-52	C-23148	C.W.K.	...	7-24-43	C-6556	J.D.C.	...	4-23-29	2627	C-7972	C.W.K.	...	4-23-29	2627	C-7972	C.W.K.
				4-18-52	C-23148	C.W.K.	...	7-24-43	C-6556	J.D.C.	...	4-23-29	2627	C-7972	C.W.K.	...	4-23-29	2627	C-7972	C.W.K.
				4-18-52	C-23148	C.W.K.	...	7-24-43	C-6556	J.D.C.	...	4-23-29	2627	C-7972	C.W.K.	...	4-23-29	2627	C-7972	C.W.K.
				4-18-52	C-23148	C.W.K.	...	7-24-43	C-6556	J.D.C.	...	4-23-29	2627	C-7972	C.W.K.	...	4-23-29	2627	C-7972	C.W.K.
				4-18-52	C-23148	C.W.K.	...	7-24-43	C-6556	J.D.C.	...	4-23-29	2627	C-7972	C.W.K.	...	4-23-29	2627	C-7972	C.W.K.
				4-18-52	C-23148	C.W.K.	...	7-24-43	C-6556	J.D.C.	...	4-23-29	2627	C-7972	C.W.K.	...	4-23-29	2627	C-7972	C.W.K.
				4-18-52	C-23148	C.W.K.	...	7-24-43	C-6556	J.D.C.	...	4-23-29	2627	C-7972	C.W.K.	...	4-23-29	2627	C-7972	C.W.K.
				4-18-52	C-23148	C.W.K.	...	7-24-43	C-6556	J.D.C.	...	4-23-29	2627	C-7972	C.W.K.	...	4-23-29	2627	C-7972	C.W.K.
				4-18-52	C-23148	C.W.K.	...	7-24-43	C-6556	J.D.C.	...	4-23-29	2627	C-7972	C.W.K.	...	4-23-29	2627	C-797	