

162
 9750
 9750
 107.430

Irma Maxwell
 22 Ellis 18A
 leaves 157A

187
 156
 143

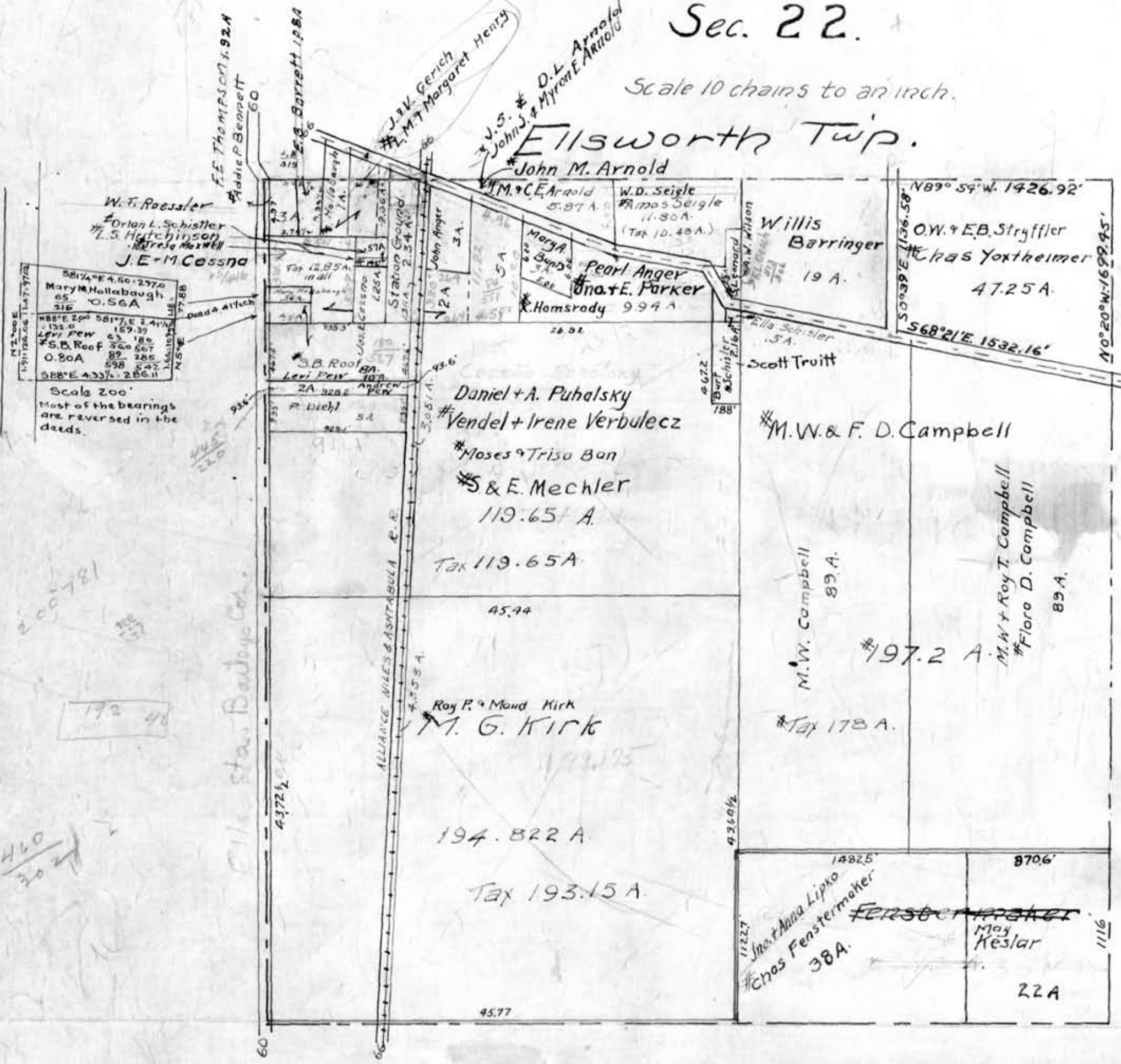
7.57
 1.43
 6.14

Sec. 22.

Scale 10 chains to an inch.

Ellsworth Twp.

John M. Arnold



Scale 200'
 Most of the bearings
 are reversed in the
 deeds.

Jackson School Dist No 7

Ellis St. Barber Co.

ALLIANCE NILES & ASHTABULA R.R.

460
 302

192 41

2