

$\frac{59}{220}$ $\frac{91}{60}$ $\frac{91}{222}$ $\frac{17}{112}$

$\frac{SB}{76}$

Sec. 21.

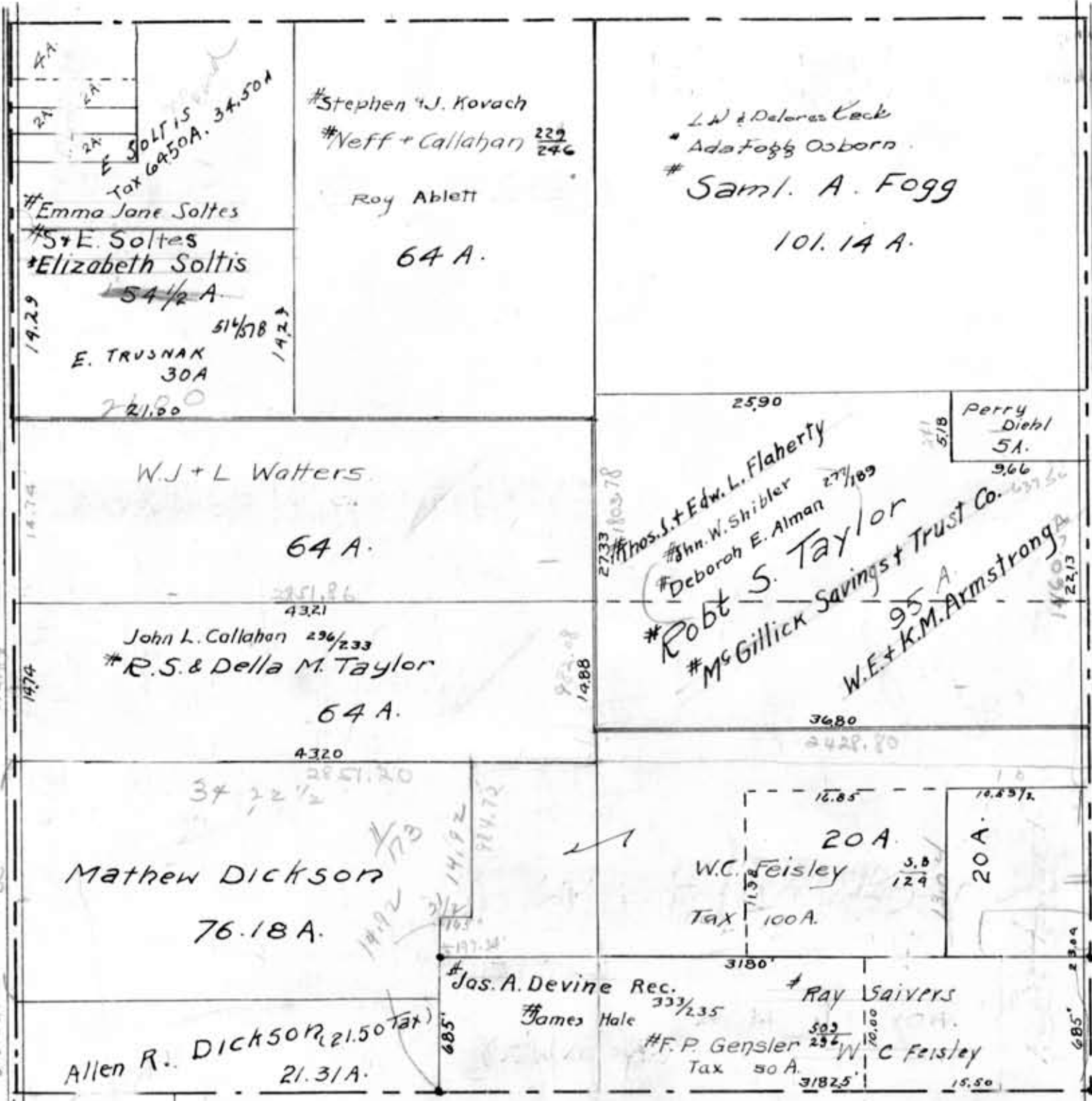
Scale 10 chains to an inch.

Ellsworth Twp.

$\frac{228}{37}$

Rosemont School Dist. No 7.

M. H. Ellis



29.86

6.750A

23.45

6.19A. 3193

Howard