

$$\begin{array}{r} 53+97 \\ 48+82 \\ \hline 5115 \\ 515' \end{array}$$

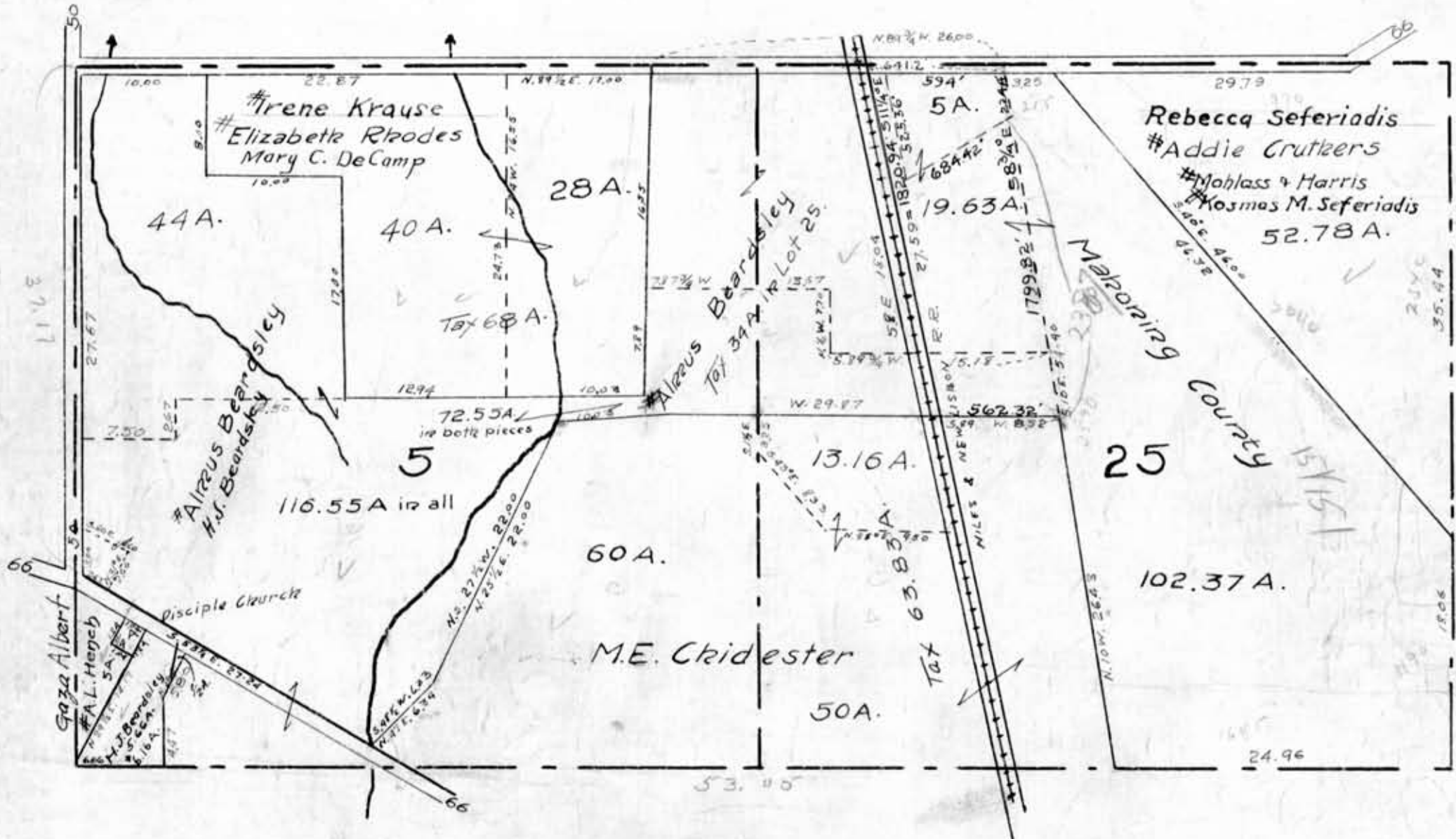
9.-  

$$\begin{array}{r} 7.74 \\ 10.37 \\ \hline 340 \end{array}$$

4<sup>th</sup> Div. Lots 5 & 25.

Scale 10 chains to an inch.

Carfield Twp.



123.16

116.55  
 34  
 19.84  
 20  
 40.35  


---

 284.64  
 40  
 264.64

116.55  
 44  
 20  
 44.35  
 191.84

